



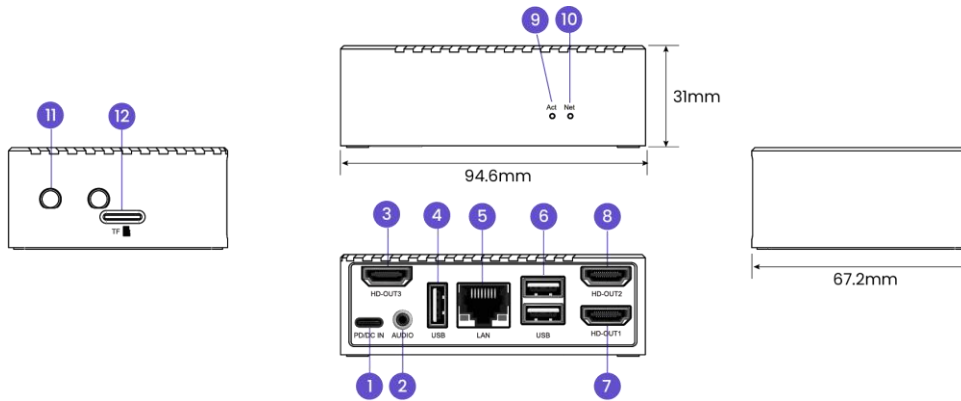
Features

- Support up to 3-screen video wall
- Superior performance with 8K UHD video playback support
- Ultra-compact aluminum bracket, easy fit behind your TV
- Integrate facial recognition technology to deliver personalized content

Technical Specification

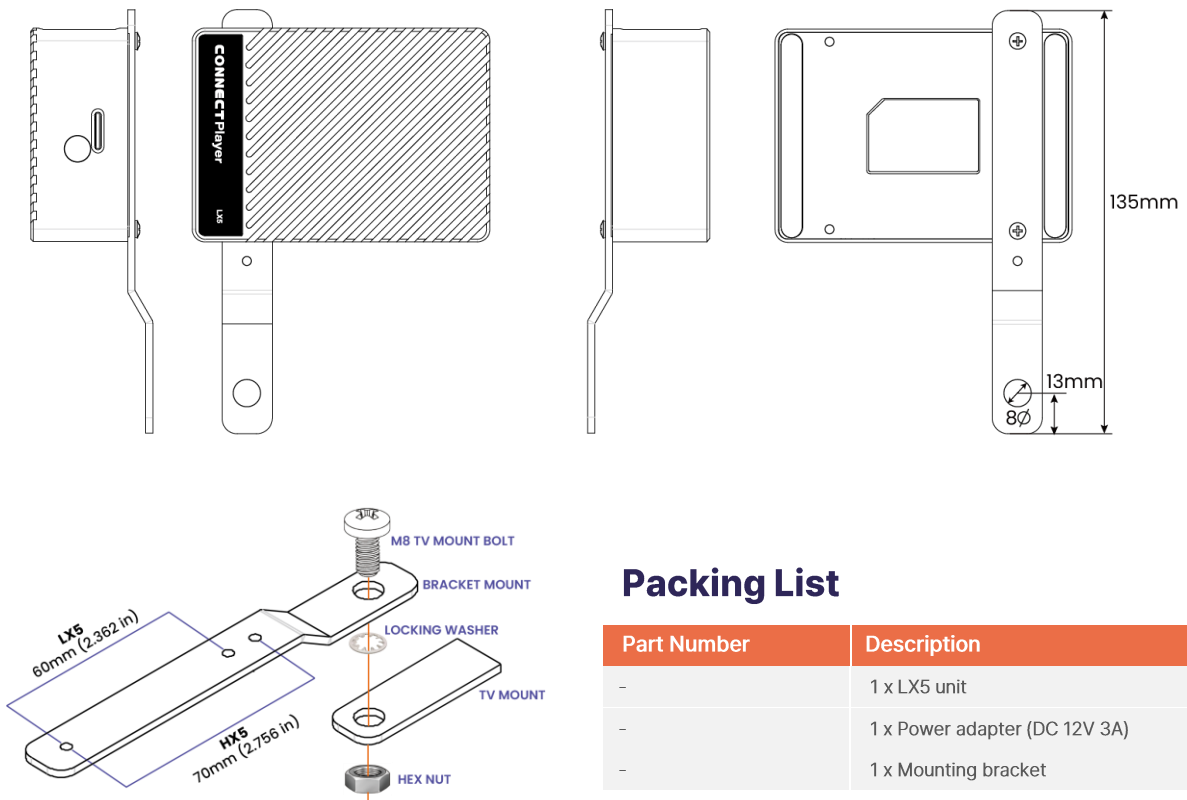
Model	HX5	LX5
Device Capability		
8K UHD Video Playback	✓	✓
Operating System	Android 12	Android 12
Storage	64GB eMMC	32GB eMMC
Offline Playback	✓	✓
Video Decode : H.265, H.264, VP9	✓	✓
I/O & HW Specs		
HDMI Input	1 x HDMI Input, up to 4K60Hz	
Video Output	Total of 4 <ul style="list-style-type: none">- 1 x HDMI output, up to 8K60Hz- 1 x HDMI output, up to 4K60Hz- 1 x HDMI output, up to 1080P60Hz- 1 x USB-C/DP output port, up to 4K60Hz	Total of 4 <ul style="list-style-type: none">- 1 x HDMI output, up to 8K60Hz- 1 x HDMI output, up to 4K60Hz- 1 x HDMI output, up to 1080P60Hz- 1 x USB-C/DP output port, up to 4K60Hz
USB	1 x USB3.0 2 x USB2.0	1 x USB3.0 2 x USB2.0
Ethernet	Gigabit RJ45	Gigabit RJ45
MicroSD Card	✓	✓
WiFi (Optional)	WiFi 2.4GHz, 50Hz	WiFi 2.4GHz, 50Hz
Power	12V-3A	12V-3A
Power Port	5.5 x 2.1mm	USB Type-C
Max. Power Consumption	15Watt	10Watt
Audio Out	3.5mm	3.5mm
ConnectPlayer Manager Local	Included	Included
ConnectPlayer Manager Cloud (Optional)	✓	✓
Mounting Bracket	Included	Included
Operating Temperature Range	-10 to +45 °C	-10 to +45 °C
Shipping weight / Device weight	0.95kg / 0.38kg	0.88kg / 0.31kg
Enclosure	Aluminum alloy	Aluminum alloy
Product Dimensions (W x D x H)	4.51" x 3.39" x 1.22" (114.8 x 86 x 31mm)	4.08" x 2.68" x 1.24" (103.6 x 68 x 31mm)
Certification	FCC, CE, KC	FCC, CE, KC
Warranty, Parts & Labor	2 years	2 years

Dimensions



- | | | | | | | | | | |
|----|---------------------------|----|-----------|---|---------|---|--------------|----|--------------|
| 1 | USB-C(Power) PD/DC-6V~20V | 2 | Audio-out | 3 | HD-OUT3 | 4 | USB 2.0 | 5 | Ethernet LAN |
| 6 | USB 2.0 x 1, USB 3.0 x 1 | 7 | HD-OUT1 | 8 | HD-OUT2 | 9 | Activity LED | 10 | Network LED |
| 11 | WiFi Antenna (Optional) | 12 | MicroSD | | | | | | |

Mounting Bracket



Packing List

Part Number	Description
-	1 x LX5 unit
-	1 x Power adapter (DC 12V 3A)
-	1 x Mounting bracket